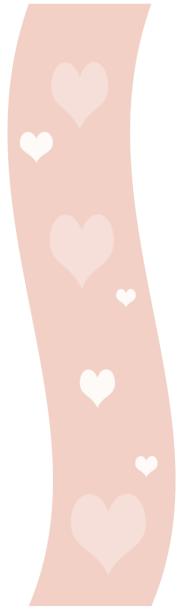


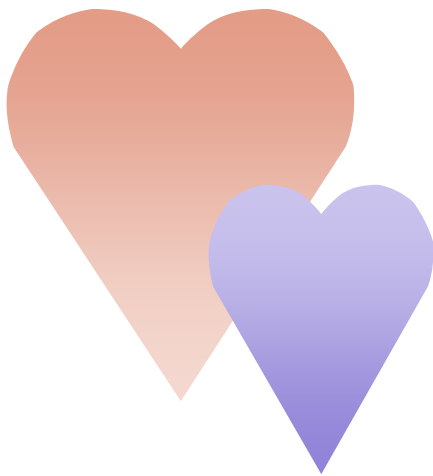
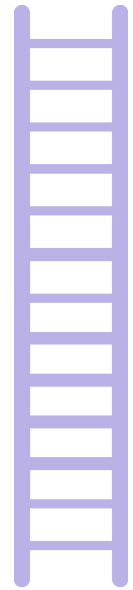
Valentine's Day



CHUTES

and

LADDERS

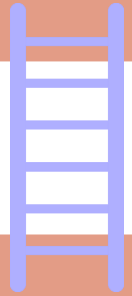
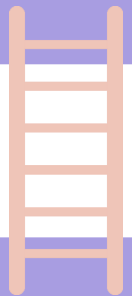


Reviews intervals for young musicians

ElisesVoiceLessons.com

SuperStringsMethod.com

FINNISH



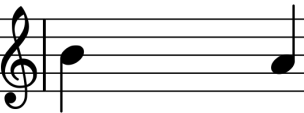
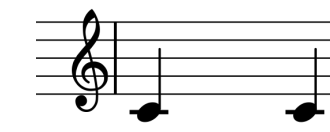
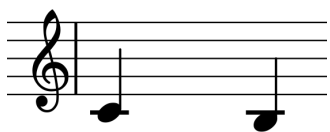
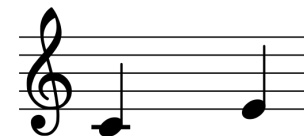
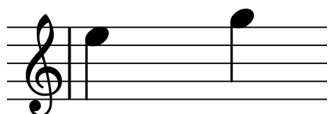
START



VALENTINES CHUTES AND LADDERS

INSTRUCTIONS:

Players/Teams use provided markers to mark their places on the board. Players take turns flipping over cards and determine the interval between the notes (this can be done visually or the teacher may flip the card over and sing or play the interval for the students for an aural skills variation). If it is the same note the player moves (1) space, if it is a second players move (2) spaces, and if it is a third players move (3) spaces. If a player lands on a ladder, s/he may climb to the designated space. If a player lands on a slide, s/he must slide down to the designated space. The first player to reach FINNISH wins.



PLAYER MARKERS AND CARDS:

